

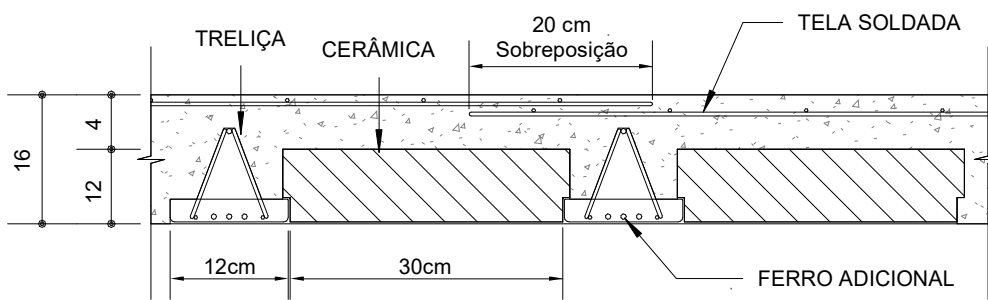
This architectural floor plan depicts a large, multi-winged building complex. The plan is characterized by a dense grid of rectangular rooms, each labeled with a number and a letter (e.g., 1A, 2B, 3C). The layout includes several long, narrow wings and larger, more complex sections. Key features include:

- Room Labeling:** Rooms are labeled with numbers (1 through 32) and letters (A through Z) to identify specific spaces. Some labels include additional information like "1A" or "1B".
- Entrances and Exits:** Several entrances and exits are marked with arrows and labels, such as "ENTRANCE" and "EXIT".
- Corridors and Hallways:** A network of corridors and hallways connects the various rooms and sections of the building.
- Structural Elements:** The plan shows structural elements like walls, doors, and windows, as well as furniture like desks and chairs in some rooms.
- Orientation:** A north arrow is located in the upper right quadrant of the plan, indicating the orientation of the building.
- Scale:** A scale bar is provided in the lower left corner, showing distances in feet (0, 10, 20, 30, 40, 50, 60, 70, 80, 90, 100).

The overall design suggests a large-scale institutional or commercial building, possibly a government office, university, or corporate headquarters. The plan is highly detailed, showing the layout of individual rooms and the flow of traffic throughout the facility.

RESUMO DE AÇO			
AÇO	BIT	COMPR	PESO
	mm	m	kgf
60A	5	11423	1794
50A	6,3	2914	1875
50A	8	3	1
50A	10	105	65
50A	12,5	42	41
50A	16	23	36
Peso Total	60A =		1794 kgf
Peso Total	50A =		2018 kgf

-- SEM ESCALA --



## ESTRUTURAL